

RSR

Quick Start Guide

Docking Speakers with Bluetooth

DS406

1. Specifications

General

Power Requirements: AC 120V~ 60Hz
 Power Consumption: 25W
 USB 2.0 socket for charging:
 5V = 500mA
 Output Power: 5W x 2
 Audio Input Sensitivity: 500mV
 Frequency Response: 40Hz - 20kHz

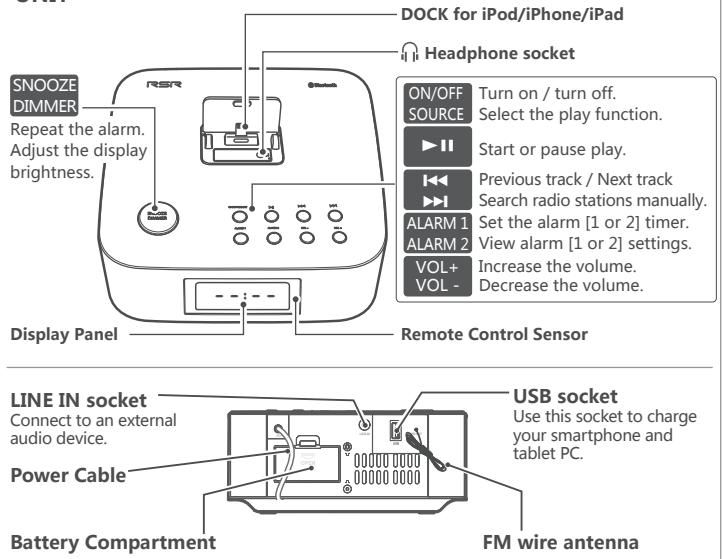
Tuning Range: 87.5 - 108MHz
 Unit Dimension (W x H x D):
 7.8 x 3.5 x 7.8 inch
 Speaker Impedance: 2Ω

Remote Control

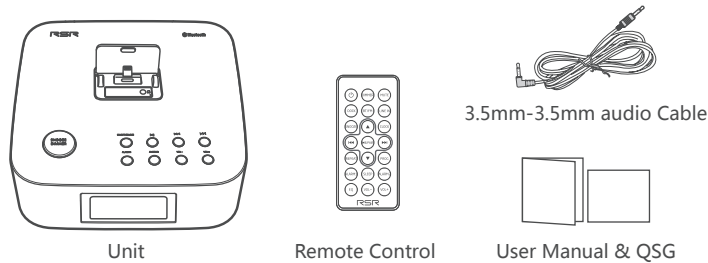
Distance/Angle: 19.7 feet (6m)/ 30°
 Battery Type: CR2025

4. Product Description

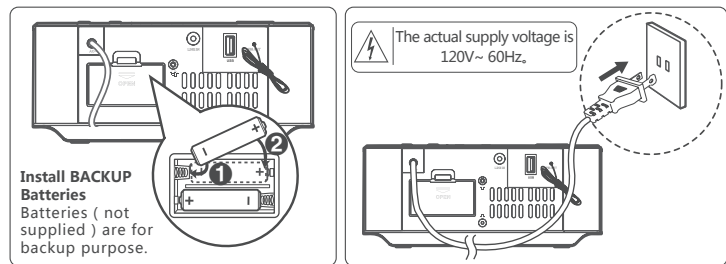
UNIT



2. Standard Accessories



3. Preparations

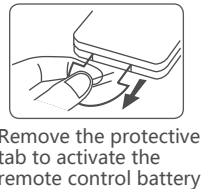


Remote Control



⏻	Turn on / turn off
MUTE	Mute or resume the sound
DIMMER	Adjust display brightness
DOCK, FM/BT, LINE IN	Select the play function
SNOOZE	Repeat the alarm (9 minutes later)
▲	Select a next/preset station
▶▶/PAIR	Start/pause play/Activate Bluetooth pairing
◀◀	Previous/Next track / Search radio stations manually
CLOCK	Set the clock
PROG	Preset stations for tuner / Scan for radio stations
REPEAT	Select repeat play modes
ALARM [1/2]	Set the alarm [1 or 2] timer
SLEEP	Set the sleep timer
EQ	Select a preset sound effect
VOL+ / VOL-	Increase / decrease the volume.

First-time use :



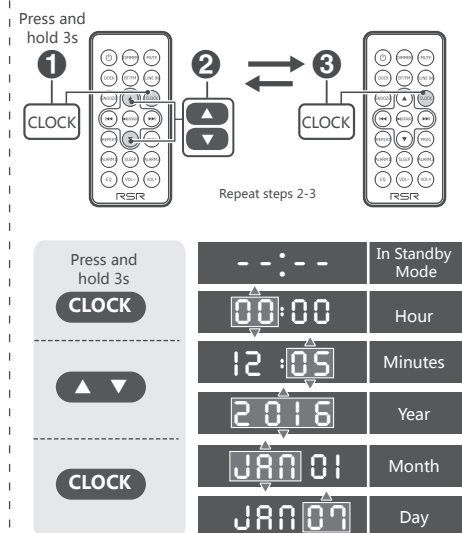
Remove the protective tab to activate the remote control battery.

Replace the Remote Control Battery:



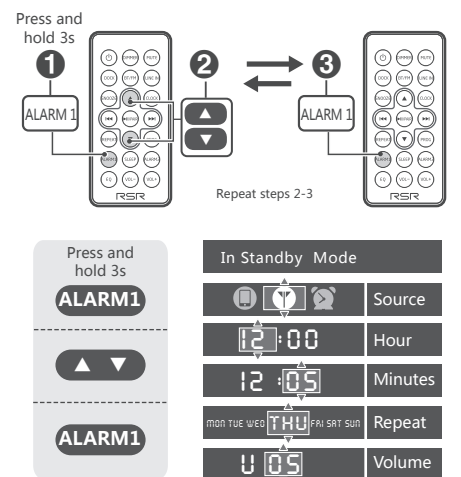
The battery (batteries or battery pack) shall not be exposed to excessive heat such as sunshine, fire or the like.

5. Set the Clock



• During time setup, press the ▶▶ button to select 12/24 hour format.

6. Set the alarm timer



• Press the ALARM (1 or 2) buttons repeatedly to activate or deactivate the timer. If the timer is activated, [AL1] or [AL2] is displayed.

7. General Operation

Standby/ON

- When you first connect the unit to the main socket, the unit will be in STANDBY mode.
- Press the ON/OFF/SOURCE button on the unit or the ⏻ button on the remote control to switch the main unit ON or OFF.
- Disconnect the main plug from the main socket if you want to switch the unit off completely.
- If there is no signal under the Bluetooth, DOCK, LINE IN mode, the unit will automatically be switched off within 15 minutes.

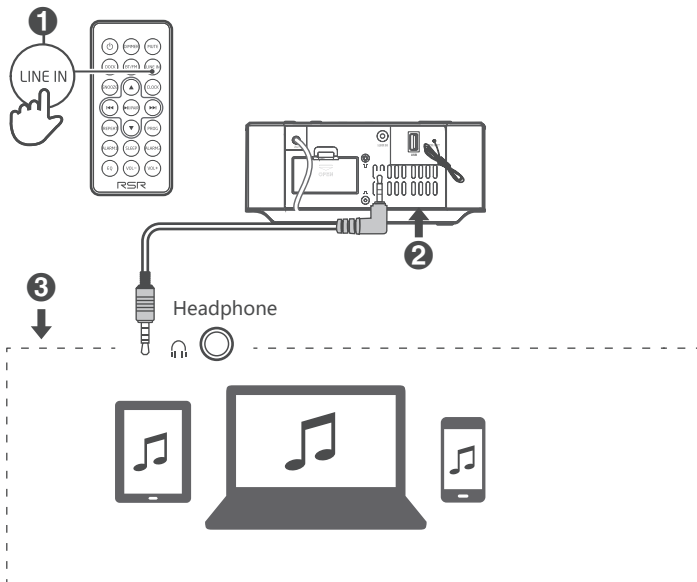
Select Modes

- Press the ON/OFF/SOURCE button on the unit repeatedly or the DOCK, LINE IN and BT/FM buttons on the remote control to select the desired mode.

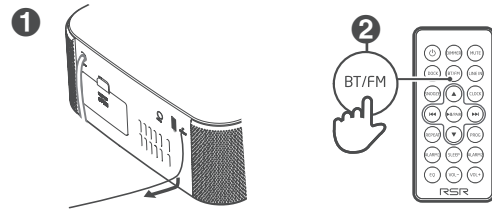
Set the Sleep Timer

- This unit can switch to standby automatically after a set period of time.
- Press the SLEEP button on remote control repeatedly to select a set period of time (in minutes).

8. LINE IN Operation

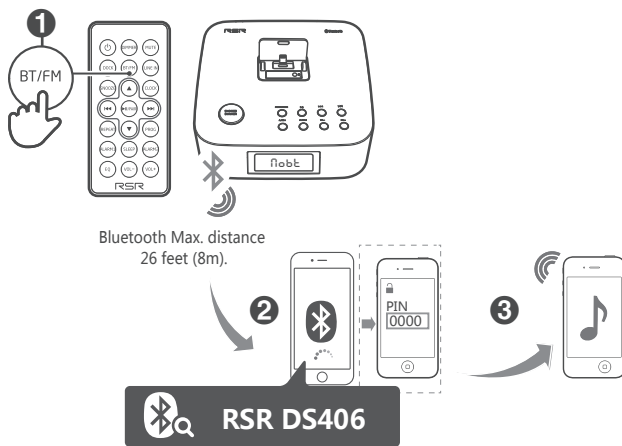


9. FM Operation

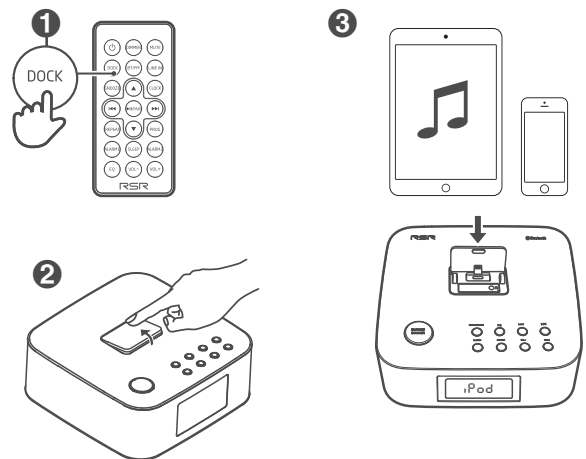


PROG	press and hold	Scan for radio stations
	press	Select a next/previous preset station
	press and hold	Search radio stations automatically
	press	Search radio stations manually (0.1 MHz)
PROG	press	Preset stations for tuner

10. Bluetooth Operation



11. iPod/iPhone/iPad Operation



Troubleshooting

To keep the warranty valid, never try to repair the system yourself. If you encounter problems when using this unit, check the following points before requesting service.

No power

- Ensure that the AC cord of the apparatus is properly connected .
- Ensure that there is power at the AC outlet.
- Press standby button to turn the unit on.

Remote control does not work

- Before you press any playback control button, first select the correct source.
- Reduce the distance between the remote control and the unit.
- Insert the battery with its polarities (+/-) aligned as indicated.
- Replace the battery.
- Aim the remote control directly at the sensor on the front of the unit.

I can't find the Bluetooth name of this unit on my Bluetooth device for Bluetooth pairing

- Ensure the Bluetooth function is activated on your Bluetooth device.
- Ensure you have paired the unit with your Bluetooth device.

1 Year free guarantee !

Thank you for buying the products of RSR !

We are offering our products with 1 year guarantee from the date of your purchase.

You can enjoy the after-sales service in case of the product is faulty or you are simply

struggling to set it up by email to our and our customer service center will revert to you.

support@richsound.com